



SDA'S GUIDE TO THE 'TOP LONDON RESIDENTIAL ARCHITECTS'

SOURCED FROM HOUZZ



INTRODUCTION

The SDA Build team have meticulously curated a list of talented architects serving the London and Greater London areas. All the architects on our list are RIBA certified and have been vetted by Houzz.

Whilst they all provide general architecture services such as planning applications and drawings, property renovations & refurbishments, loft conversions, extensions and kitchen and bathroom design, many of the architects are specialists in areas such as sustainable homes and basement conversions.

So how did we choose who to put on the list?

Our criteria were:

1. Those serving the London & Greater London area
2. Average project size ranging from £80,000 - £5 million
3. RIBA & Houzz certified
4. Simply the ones whose work we liked

Key for highlighted specialities:



Sustainable Homes



Basement Conversions



Renovations

Disclaimer: SDA Build has put this list together only in advisory role. You will need to independently assess architects you choose to contact from this list to match your project.



CONTENTS

<i>Introduction</i>	2
<i>Sustainable homes specialists</i>	4
<i>Basement specialists</i>	11
<i>Renovation specialists</i>	17
<i>Table of contact details</i>	24



SUSTAINABLE HOMES SPECIALISTS



Ade Architecture

www.ade-architecture.co.uk

We aim to bring an exceptionally high level of conceptual clarity to the design of our buildings, irrespective of size, scale and complexity. We are committed to producing buildings that are sustainable and energy efficient and are fully conversant with current and developing technologies in this field.

Average cost of build: £80,000 - £2m

07931 542 830

daniel@ade-architecture.co.uk

www.ade-architecture.co.uk



See full list of Architects



SUSTAINABLE HOMES SPECIALISTS



Colony Architects

www.colonyarchitects.com

Colony is a group of architects, designers, planners, building surveyors and construction professionals with a shared interest in creating great things. We treat every project as an opportunity to improve the world, even just a little, and have a strong ethical commitment in our work.

Average cost of build: £80,000 - £2m

07990 515 372

stu@colonyarchitects.com

www.colonyarchitects.com



See full list of Architects



SUSTAINABLE HOMES SPECIALISTS



Shape Architecture

www.shapearchitecture.co.uk

Shape Architecture is a Chartered RIBA practice working throughout London, Brighton and the South-East. The practice has over 20 years of experience of sustainable architecture through the work of its Director Jason Wren.

Average cost of build: £80,000 - £2m

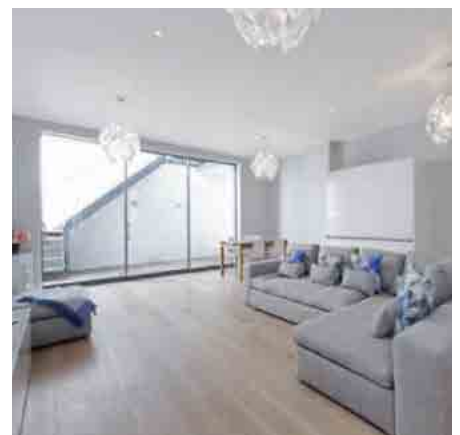
020 3770 6360

london@shapearchitecture.co.uk

www.shapearchitecture.co.uk



See full list of Architects



SUSTAINABLE HOMES SPECIALISTS



VC Architectural Services

veronica_congdon.houzz.co.uk

VC Architectural Services, led by Veronica has transformed the spaces of several homes across Southwest London. Her attention to detail and imaginative ideas allows her to give her clients fresh, creative and practical solutions.

Average cost of build: £80,000 - £2m

07984 069 145

veronicacongdon@blueyonder.co.uk

http://veronica_congdon.houzz.co.uk



See full list of Architects



SUSTAINABLE HOMES SPECIALISTS



dRAW Architects

www.draw-architecture.co.uk

dDRAW provides a unique, holistic and professional approach to architectural design. We consider lifestyle, architecture, interior design, energy conservation and most importantly context.

Average cost of build: £50,000 - £2m

020 8874 6749

info@draw-architecture.co.uk

www.draw-architecture.co.uk



See full list of Architects



SUSTAINABLE HOMES SPECIALISTS



Maisuria Architects

www.maisuria-architects.co.uk

Maisuria Architects are a design focused practice committed to an innovative approach to progressive architectural design that is equally practical, sustainable, contextual and lifestyle enhancing.

Average cost of build: £50,000 - £5m

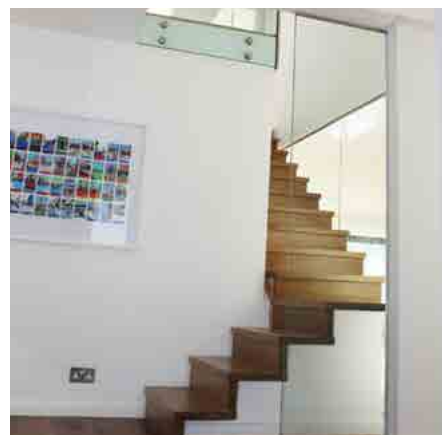
020 8240 0882

info@maisuria-architects.co.uk

www.maisuria-architects.co.uk



See full list of Architects



SUSTAINABLE HOMES SPECIALISTS



Granit Architects

www.granit.co.uk

Granit is a residential architects practice in London with over 27 years experience in designing private luxury homes in London, the UK and abroad. We have worked on everything from new build houses to basement conversions, from space-creating inner London work to fine period and country properties, and on projects around the world

Average cost of build: £100,000 - £2m

020 7924 4555

info@granit.co.uk

www.granit.co.uk



See full list of Architects



BASEMENT SPECIALISTS



SDA Build London

www.sdabuildlondon.co.uk

SDA Build London have been building & renovating properties in the London area for over 2 decades with specific expertise in basement conversions & period property restorations.

Average cost of build: £150,000 - £2m

020 8191 7595

sammy@sdabuildlondon.co.uk

www.sdabuildlondon.co.uk



See full list of Architects 



BASEMENT SPECIALISTS



Jo Cowen Architects
www.jocowenarchitects.com

We offer a complete architectural and interiors service from inception, concept design, statutory approvals, contractor procurement, to management on-site — all the way to completion.

We view every project we work on as a joint venture, where our role is to deploy our expertise and skill to realise our clients' vision.

Average cost of build: £100,000 - £2m

020 7371 0357
info@jocowenarchitects.com
www.jocowenarchitects.com



See full list of Architects 



BASEMENT SPECIALISTS



Alex Tart Architects
www.alextartarchitects.com

The ethos of delivering beautiful, high quality classical and contemporary residential designs defines the practice. We strongly believe there is place for both styles.

Our current list of exciting projects range from new classical country houses to basement extensions and refurbishments in central London.

Average cost of build: £100,000 - £2m

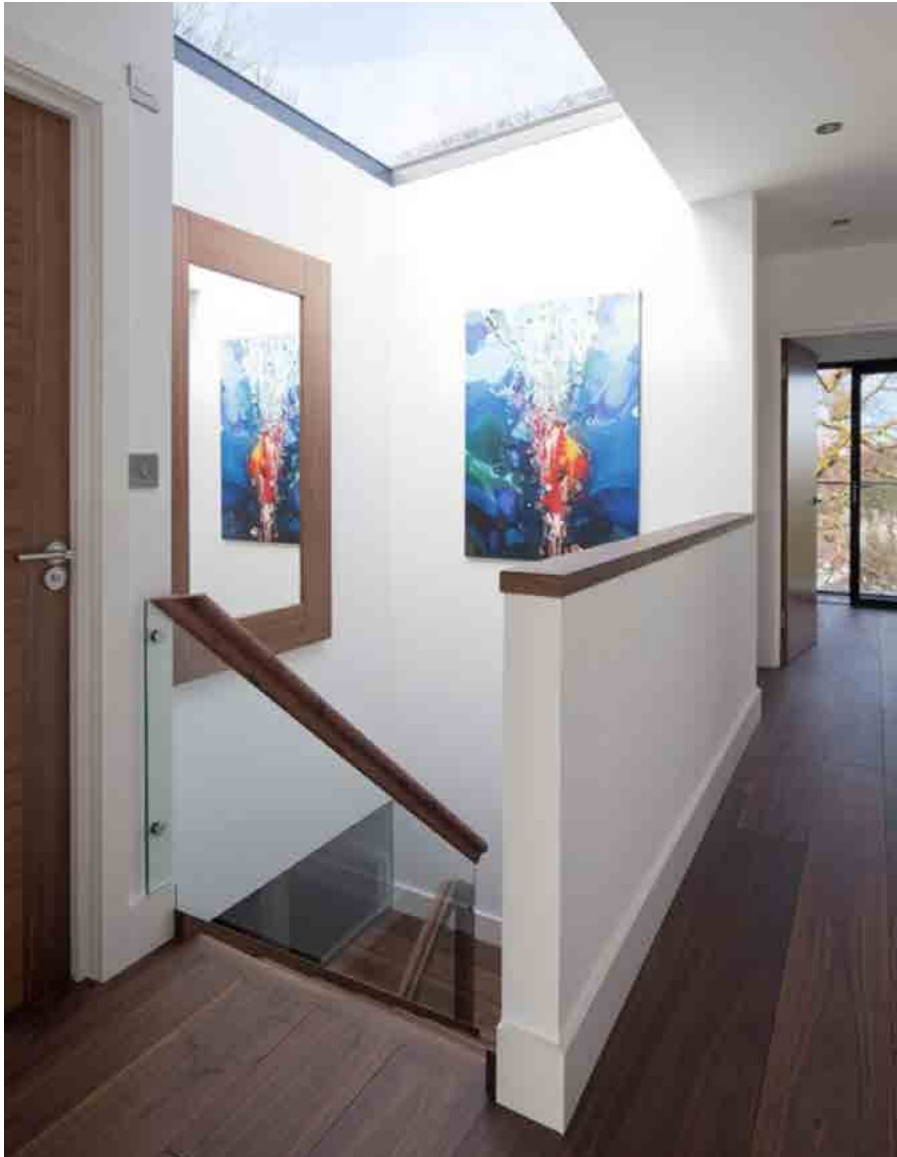
020 3937 8989
office@alextartarchitects.com
www.alextartarchitects.com



See full list of Architects 



BASEMENT SPECIALISTS



Locksley Architects

www.locksleyarchitects.com

We have over 20 years' experience working on high profile luxury residential projects. We have gained a reputation for restoring period buildings and complimenting them with unique extensions that provide the client with additional space, light & high quality materials.

Average cost of build: £100,000 - £2m

020 7206 2727

info@locksleyarchitects.com

www.locksleyarchitects.com



See full list of Architects 



BASEMENT SPECIALISTS



DNA Architecture

www.dnaarchitecture.co.uk

As architects we take a holistic view to the design process. Exterior, interior, structure, services, finishes etc. are all intrinsically linked and should be fully thought through to deliver the best end results.

Average cost of build: £100,000 - £2m

020 8946 2222

enquiries@dnaarchitecture.co.uk

www.dnaarchitecture.co.uk



See full list of Architects



BASEMENT SPECIALISTS



F3 Architects

www.f3architects.co.uk

F3 Architects LLP has predominantly specialised in the residential architectural sector, working on both new-build and refurbishment projects for a variety of private clients, and has established a reputation for innovative contemporary design and delivery of homes and apartments to the highest finish, to meet a range of budgets.

Average cost of build: £500,000 - £3m

020 7267 8332

info@f3architects.co.uk

www.f3architects.co.uk



See full list of Architects



RENOVATION SPECIALISTS



Simon Gill Architects

www.simongillarchitects.co.uk

Simon Gill Architects is an internationally published practice established in 1997. We aspire to creating thoughtful, bespoke buildings that provide convenience and enjoyment whilst fitting in with their natural environment.

Average cost of build: £150,000 - £2.5m

020 3713 9465

info@simongillarchitects.co.uk

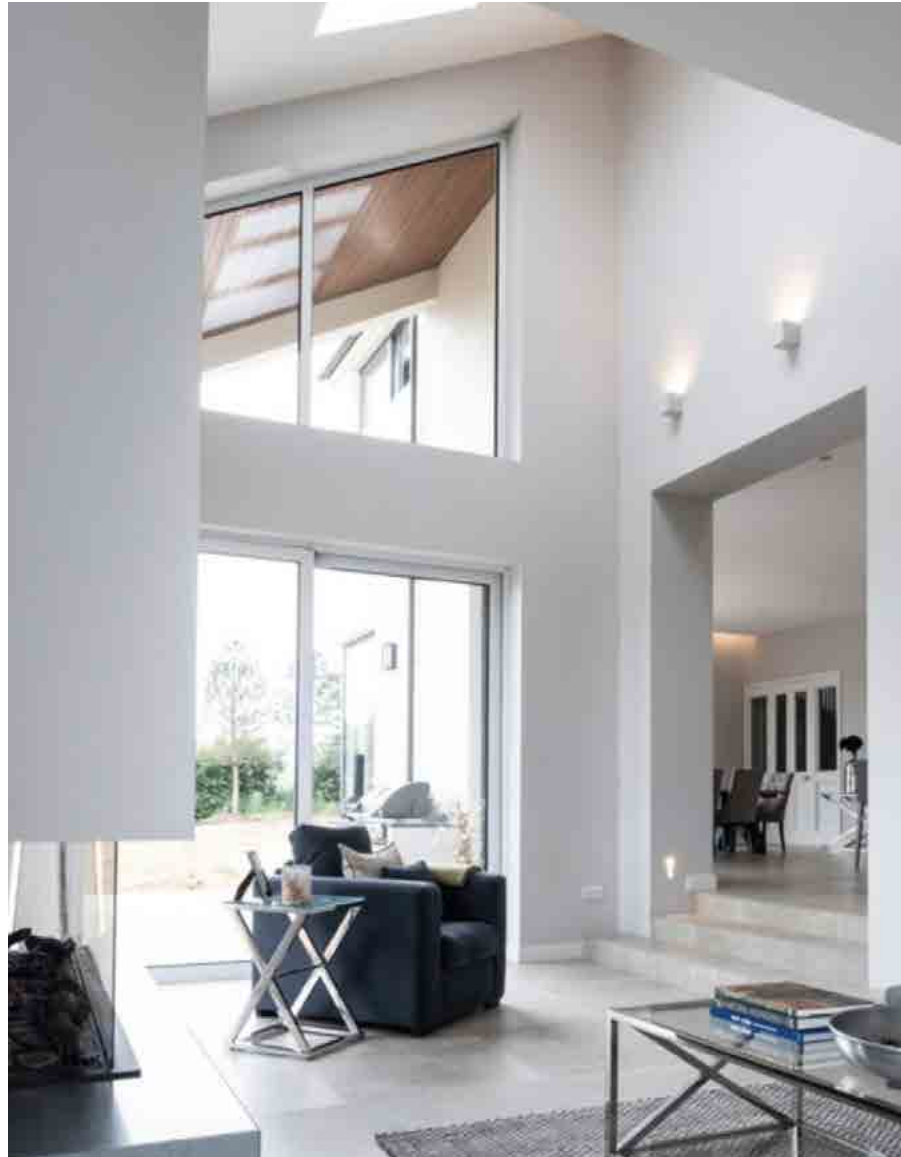
www.simongillarchitects.co.uk



See full list of Architects 



RENOVATION SPECIALISTS



Des Ewing Residential Architects

www.desewing.com

Award winning firm, Des Ewing Residential Architects are known for their elegant designs. From classic to contemporary, the DE team is known for their versatility and ability to complete projects cost-effectively and on schedule.

Average cost of build: £50,000 - £5m

020 7305 7481

home@desewing.com

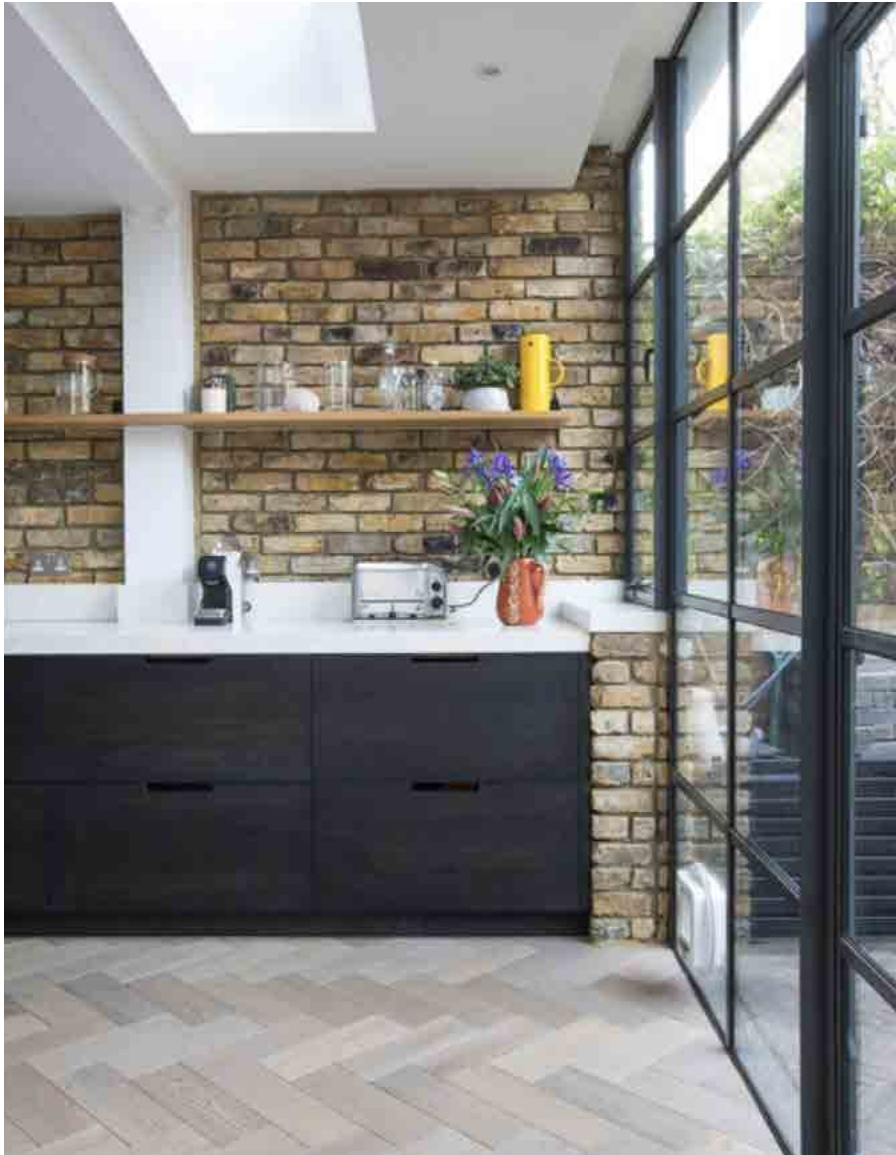
www.desewing.com



See full list of Architects 



RENOVATION SPECIALISTS



Martins Camisuli
Architects
www.martincamisuli.co.uk

We seek to fully understand the needs of our clients so that we can develop an appropriate creative response that meets all project objectives and fully answer the brief.

We strive to find the balance between the financial constraints of a project and the potential to explore creative design solutions towards the goal of a more sustainable environment.

Average cost of build: £150,000 - £500,000

020 7 267 8622

sebastian.camisuli@martincamisuli.co.uk

ana.martins@martinscamisuli.co.uk

www.martincamisuli.co.uk



See full list of Architects 



RENOVATION SPECIALISTS



AR Architecture

www.ar-arch.co.uk

AR Architecture is a London-based, award-winning creative studio of architects and interior designers, distinguished by its international expertise and local capability.

Average cost of build: £200,000 – £5m

0207 209 2851

info@ar-arch.co.uk

www.ar-arch.co.uk



See full list of Architects



RENOVATION SPECIALISTS



DDWH Architects

www.ddwharchitects.com

We offer a full range of design services for all types of housing design, from refurbishment (including Listed Buildings - we love bringing new ideas and making old and new work together, it's magic!) and extensions to new builds of individual houses or larger developments.

Average cost of build: £100,000 - £5m

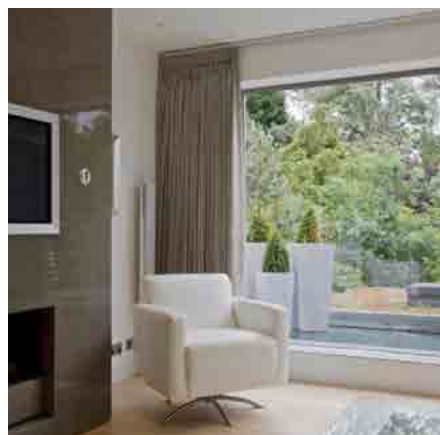
0208 343 0156

warrenhowling@ddwharchitects.com

www.ddwharchitects.com



See full list of Architects



RENOVATION SPECIALISTS



JB Architecture
www.johnbowmer.com

I established my own practice in London in 2014, continuing my work on listed houses and in particular terraced houses of the mid to late Georgian period, mostly listed Grade II. More recently I have worked on UK projects focusing on listed buildings in London and the Home Counties.

Average cost of build: £120,000 - £450,000

07894 706 160
jb.jba@btinternet.com
www.johnbowmer.com



See full list of Architects 



RENOVATION SPECIALISTS



SPA Architects

www.polesciukarchitects.com

At the heart of what we do is reinvigorate spaces that have become unusable or outdated for modern day life. We work closely with our residential clients in London to breathe life into buildings and to adapt each home to client's way of life, their design tastes and budget.

Average cost of build: £50,000 – £1m

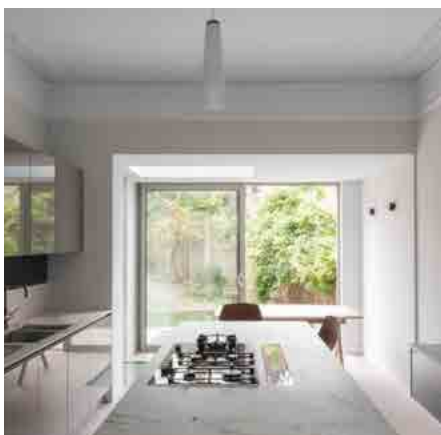
020 7431 8580

enquiries@polescukarchitects.com

www.polescukarchitects.com



See full list of Architects



RENOVATION SPECIALISTS



OMNIDE ARCHITECTS

www.omnide.com

OmniDe is an international and collaborative company formed to answer the rising demand of high-end quality design via an efficient and organised approach to the project through the design and planning of the environment surrounding human life. The quality in approaching every project is driven by the combined and diverse experience of its five members that through shared facility work together to develop each project.

Average cost of build:
£100,000 - £2,000,000

020 7267 8332
ilazzaroni@omnide.com
www.omnide.com



See full list of Architects



TABLE OF CONTACT DETAILS

Name	Address	Contact Details	Speciality Icons
Ade Architecture	2 Munro Terrace Riley Street London SW10 0DL	07931 542 830 daniel@ade-architecture.co.uk www.ade-architecture.co.uk	
Colony Architects	Intermezzo Woking Road Guildford Surrey GU1 1QE	07990 515 372 stu@colonyarchitects.com www.colonyarchitects.com	
Shape Architecture	Chester House Fulham Green 81-83 Fulham High Street London SW6 3JA	020 3770 6360 london@shapearchitecture.co.uk www.shapearchitecture.co.uk	 
VC Architectural Services	Unit 16 The Old Power Station 121 Mortlake High Street London SW14 8SN	07984 069 145 veronicacongdon@blueyonder.co.uk www.veronica_congdon.houzz.co.uk	 
dRAW Architects	340 Old York Road Wandsworth Town London SW18 1SS	020 8874 6749 info@draw-architecture.co.uk www.draw-architecture.co.uk	
Maisuria Architects	Northdown Villa South Cheam Surrey SM2 7AA	020 8240 0882 info@maisuria-architects.co.uk www.maisuria-rchitects.co.uk	
Granit Architects	16 Porteus Place London SW4 0AS	020 7924 4555 info@granit.co.uk www.granit.co.uk	  
SDA Build London	Chester House 81-83 Fulham High Street London SW6 3JA	020 8191 7595 sammy@sdbuildlondon.co.uk www.sdbuildlondon.co.uk	 
Jo Cowen Architects	533 King's Road London SW10 0TZ	020 7371 0357 info@jocowenarchitects.com www.jocowenarchitects.com	
Alex Tart Architects	The Old Boathouse Putney London SW15 1LB	020 937 8989 office@alextartarchitects.com www.alextartarchitects.com	 
Locksley Architects	Westbourne Studios - Unit 21 Notting Hill London W10 5JJ	020 7206 2727 info@locksleyarchitects.com www.locksleyarchitects.com	 

TABLE OF CONTACT DETAILS

Name	Address	Contact Details	Speciality Icons
DNA Architecture	11a Queens Road Wimbledon SW19 8NG	020 8946 2222 enquiries@dnaarchitecture.co.uk www.dnaarchitecture.co.uk	
F3 Architects	5 Rochester Mews NW1 9JB	020 7267 8332 info@f3architects.co.uk www.f3architects.co.uk	
Simon Gill Architects	Riverbank House 1 Putney Bridge Approach London SW6 3JD	020 3713 9465 info@simongillarchitects.co.uk www.simongillarchitects.co.uk	 
Des Ewing Residential Architects	4th Floor 100 New Bond Street London W1S 1SP	020 7305 7481 home@desewing.com www.desewing.com	
Martins Camisuli Architects	Unit 1 2a Oakford Road London NW5 1AH	020 7267 8622 sebastian.camisuli@martinscamisuli.co.uk ana.martins@martinscamisuli.co.uk www.martinscamisuli.co.uk	 
AR Architecture	Old Town Hall Hampstead 213 Haverstock Hill London NW3 4QP	020 7209 2851 info@ar-arch.co.uk www.ar-arch.co.uk	 
DDWH Architects	7 Lovers Walk London N3 1JH	020 8343 0156 warrenhowling@ddwharchitects.com www.ddwharchitects.com	
JB Architecture	11 Barkston Gardens Earl's Court London SW5 0ER	07894 706 160 jb.jba@btinternet.com www.johnbowmer.com	
SPA Architects	8a Belsize Court Garages Belsize Lane London NW3 5AJ	020 7431 8580 enquiries@polescukarchitects.com www.polescukarchitects.com	
OmniDe Architects	96 Belsize Lane NW3 5BE London	020 7267 8332 ilazzaroni@omnide.com www.omnide.com	

BOOK A FREE PROPERTY RENOVATION ASSESSMENT

Would you like to know what it takes to get your project off the ground? Book a **free** property assessment with Sammy Ene, property renovations expert and owner of SDA.

[Book a Consultation](#)

Call: **020 8191 7595** or
Email: enquiries@sdabuildlondon.co.uk

