



SDA
BUILD LONDON



SAMMY ENE

With an impressive track record of more than 250 projects in 14 years, SDA Build London have helped associate business partners grow and expand. Their expertise, eye for detail and ability to find workable and innovative solutions to challenges, has meant that owner Sammy and his team have earned a reputation of delivering projects on-time, within budget and to a high standard.

A number of his projects have been featured in House and Garden magazine for work in prime southwest London locations such as Fulham, Putney, Wandsworth, Chelsea and Richmond.

Being nimble and adapting to changes during a project is something Sammy strongly believes in. It's this approach, together with his easy ability to listen and advise, that makes him a valuable asset, particularly on more complex projects where he is working with his team, architects, property developers, and clients, at any one time.





AWARD-WINNING
PROPERTY
REFURBISHMENT
& RENOVATION
SPECIALISTS

OLD VICARAGE HENLEY-ON-THAMES





Brief

A Victorian build – to preserve, retain and reinstate original features. Transforming an old Vicarage into a family home and a coach-house into a guest-house.

Build Duration: 56 weeks

Architect: Colony Architects

Design: Melinda Swann

Solutions

We used reclaimed materials and sourced photos and plans from the original build. We combined traditional craftsmanship with new age technologies to ensure it was both contemporary and eco-friendly.

Finishing touches

The SDA Build London team led this beautiful Victorian house renovation and restoration project, restoring the Grade-listed building to its original splendour.

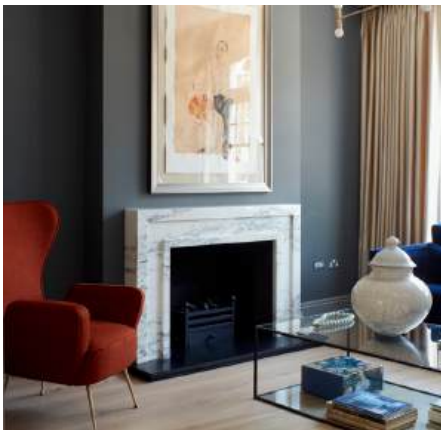
At every twist and turn you will find something to delight. This beautiful property was loving restored with traditional building techniques whilst subtly upgrading it to suit modern day living, all in keeping with the period.

Results

A modern self sustained green energy house, light and spacious.



CHIDDINGSTONE





Brief

This project needed a complete refurbishment with additional rooms to be built in the basement and loft. The client wanted an Italian theme with as much light as possible.

Build Duration: 60 weeks

Architect: BTL Design

Solutions

We combined traditional joinery techniques and hardwood finishes with high ceilings to a modern high-spec throughout. We increased the number of rooms by building a side return extension, loft and pod conversion. Glass doors and frames were used extensively, giving the property a sense of light, air and space, along with the property's high ceilings. Together, with carefully selected soft furnishings and complementary colours, we created a harmonious living space.

Details

The works involved major structural modifications which included the lowering of an existing half basement by 1 metre and excavating further to create a full basement.

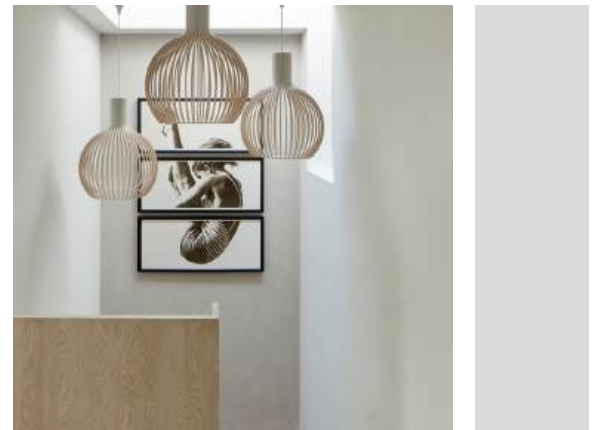
A rear extension was created on the ground floor that extended into the side return, with a pod room on the top floor. All pipework and heating were replaced and a complete rewire was done. The entire property including the bathrooms and kitchen were refurbished and redecorated to an extremely high standard. We also replaced the roof and all windows and doors.

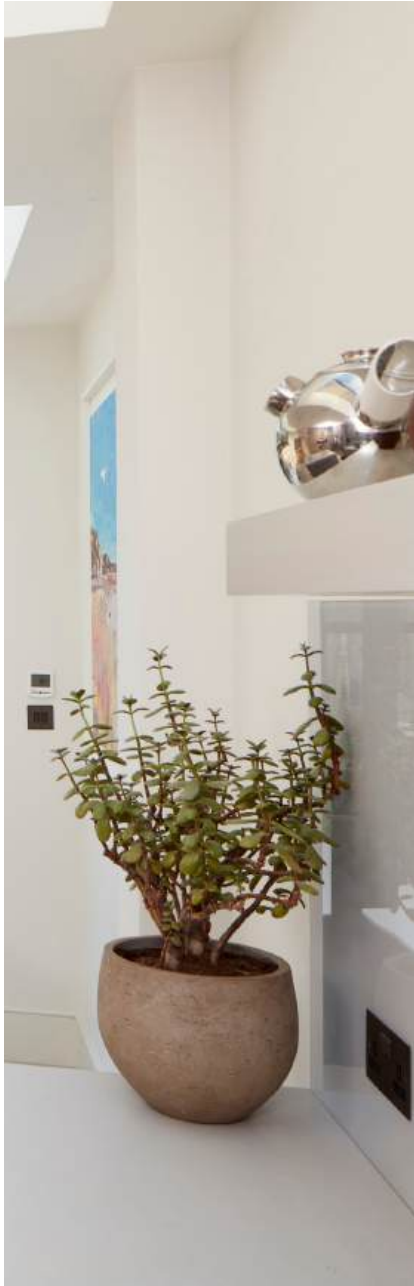
Results

A beautiful, light and spacious home with a basement, side extension and loft conversion to maximise the space, making it ideal for some cosy family time as well as for entertaining friends and family.



CRABTREE





Brief

Our clients, wanted to increase the living space in their home with a complete basement dig out. We added a swimming pool, cinema, utility and boiler room and side and rear extensions creating a dramatic kitchen and dining area, with glass roofs.

Build Duration: 52 weeks

Architect: Ade Architecture

Design: Colour Interiors

Details

This was a complex project as the house was on two levels, the rear being 1.5 metres lower than the front. Our clients also mentioned the lack of hot water as a constant problem.

Solutions

The basement had to be created on three different levels. Two levels followed the shape of the house with the third level being dug out for the swimming pool, at a depth of 5 metres. To solve the hot water problem we installed a 500-litre mega flow system in a custom made boiler room.

The property refurbishment also included a complete rewire and Integrated Home Automated System.

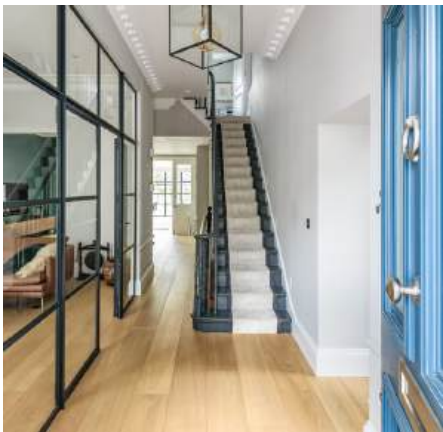
The design of the garden integrated seamlessly with the inside. Artificial grass was laid and a patio area was created with walk on glass over the swimming pool.

Results

Happy clients, with their dream home, containing a cinema and swimming pool in the heart of London. The result matched their vision of a home that was stylish, light, modern and spacious; built to a very high spec.



BEVERLEY ROAD





Brief

This project required a complete refurbishment, including a new basement and loft conversion. The clients, who have a family, sought a modern and functional living space. They approached us after seeing the success of our previous projects.

Build Duration: 56 weeks

Architect: Ade Architecture

Interior Designer: Karena Clayton

Solutions

We overcame significant groundwater challenges by leveraging our expertise in basement construction. The underpinning process was adapted to ensure stability and long-term protection against water ingress. The interior design integrated high-end finishes, custom joinery, and thoughtful lighting to create a welcoming and elegant home. The addition of glass elements and modern fixtures enhanced the sense of space and natural light throughout.

Details

The project involved extensive structural work to create a fully waterproofed basement featuring an entertainment room, bar area, and en-suite bedroom. A loft conversion was also completed to add additional living space. Challenges during the build included managing groundwater issues, particularly due to the site's proximity to a river and pond. This required soil testing, pre-start assessments, and careful underpinning—a task made possible through our experience on similar projects.

All mechanical systems, including heating and electrical wiring, were replaced. The interiors were finished to a mid to high-end specification, reflecting the family's desire for a blend of style and functionality.

Results

A luxurious and practical home designed for family living and entertaining. The bespoke basement and loft conversion maximised the available space while maintaining a cohesive aesthetic. Following the success of this project, the family commissioned us for several additional properties in the area, further solidifying our strong working relationship.



UPPER RICHMOND ROAD





Brief

This project involved extending and lowering the existing basement of a Victorian house on a bustling main road in Putney. The clients, who have a family, sought a spacious, functional home while preserving the property's original character and minimising noise from the road.

Build Duration: 56 weeks

Architect: Ade Architecture

Solutions

The original small basement was transformed by lowering and extending it to provide a generous, multi-functional living area. The terrace levels were carefully excavated and designed to blend with the indoor spaces, ensuring a balanced aesthetic and functional flow. Noise reduction measures were implemented to maintain a peaceful environment, despite the property's location on a busy road.

Details

The scope of work included extensive structural modifications to create a large open-plan basement. This space now houses a kitchen, family room, boot room, utility room, cloakroom, and plant room. On the ground floor, the existing reception rooms were renovated, and a small cloakroom and a spacious office were added.

The first floor features an en-suite master bedroom and renovated bathrooms for the children, with additional insulation for bedroom walls to enhance comfort. The second floor was reconfigured to include a guest bedroom, two children's bedrooms, another bathroom, and improved access to the flat roof terrace by introducing a new hallway door.

Challenges arose with the high garden levels, requiring substantial excavation to create terraces and break up the sightlines, ensuring a seamless view from the basement kitchen. The project also included hard landscaping to enhance the outdoor spaces. Additionally, great care was taken to preserve the original Victorian features, such as covings, ceilings, and window panelling, while addressing concerns about road noise from the basement kitchen. The project also included hard landscaping to enhance the outdoor spaces. Additionally, great care was taken to preserve the original Victorian features, such as covings, ceilings, and window panelling, while addressing concerns about road noise.

Results

The completed home is a beautiful, modernised Victorian property, perfect for family living. It features a large, light-filled open-plan kitchen and family room, elegant reception spaces, and thoughtfully renovated bedrooms and bathrooms. The terraces and landscaping add to the charm, creating a private oasis amidst the urban setting.



SERVICES



Build

SDA build London offer a residential building service across North, North West and South of London. We specialise in house extension, basement and loft conversion projects, both large and small, in areas such as Fulham, Putney, Chelsea and Hammersmith.



Architectural

SDA Build London provide a full Architectural Design and Build service, to clients across North, North West and South of London. We believe in designing projects that truly transform a home – and a lifestyle – all while keeping within budget.



Interior

We offer a complete interior design service across North, North West and South of London, and work with you to create your dream home or work space. We guide you every step of the way – from choosing hard finishes through to fabrics – and our years of experience means we have a wealth of ideas and knowledge to inspire you.

BUILDING YOUR NEW LIFESTYLE

Expanding the space in your home or workplace is not only about adding value, it's also about creating a space that works for you and the things you love. At SDA Build London, we understand this and focus on the end result: a brand new beautiful, functional and structurally sound living or working space for our clients.

SDA Build London handles residential and commercial projects for a range of properties and clients from high-spec new builds to full refurbishments, and work on Grade listed properties. Having built a trusted team of more than 50 skilful trades people and subcontractors over the years, SDA is able to bring the right teams together quickly, to deliver outstanding projects, on time.





T: 0208 191 7595 M: 07743 965998
E: ENQUIRIES@SDABUILDLONDON.CO.UK

SDABUILDLONDON.CO.UK